



Licking County Soil and Water Conservation District

771 E. Main Street, Suite 100 - Newark, Ohio 43055-6971
Phone (740) 670-5330 - Fax (740) 670 - 5338
www.lickingswd.com

Licking County Petition Drainage Projects

Project Name: Ballman Ditch

Township: Etna

Type: 15-inch tile main and 2 catch basins

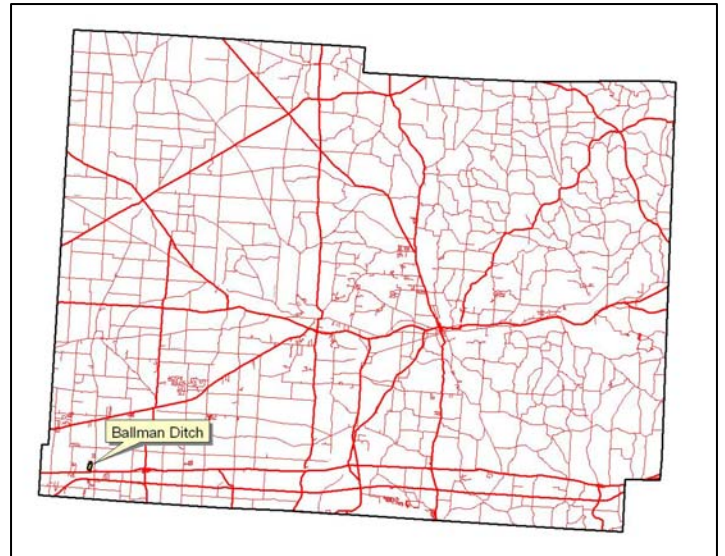
Established: Sep 1, 1984

Watershed: 30 acres

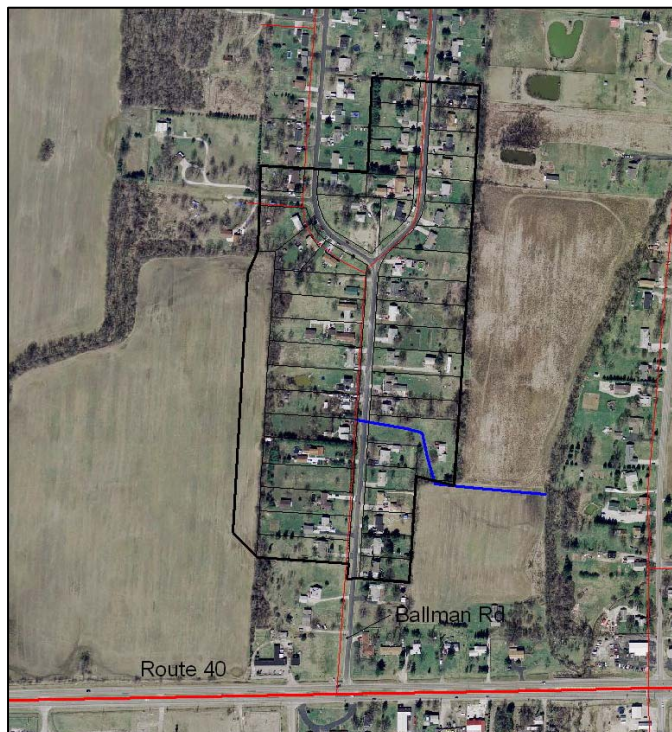
Length of project: 940 feet

Assessed Parcels: 47

Original construction cost: \$8,681.30



Comments: Collects stormwater from Ballman Road; flows east and outlets into Sycamore Creek; tile was inspected with video camera in September 2007; tile starting to collapse in many places and may need replaced in the future.



Map Legend

Blue lines: Open ditches or tile mains
Dark lines: Watershed boundary
Lighter lines: Parcel boundaries
Red lines: Roads