



Licking County Soil and Water Conservation District

771 E. Main Street, Suite 100 - Newark, Ohio 43055-6971
Phone (740) 670-5330 - Fax (740) 670 - 5338
www.lickingswcd.com

Licking County Petition Drainage Projects

Project Name: Chantilly Subdivision
(Single County Ditch)

Township: Union

Type: Subdivision Drainage Maintenance
Outside of public rights-of-way

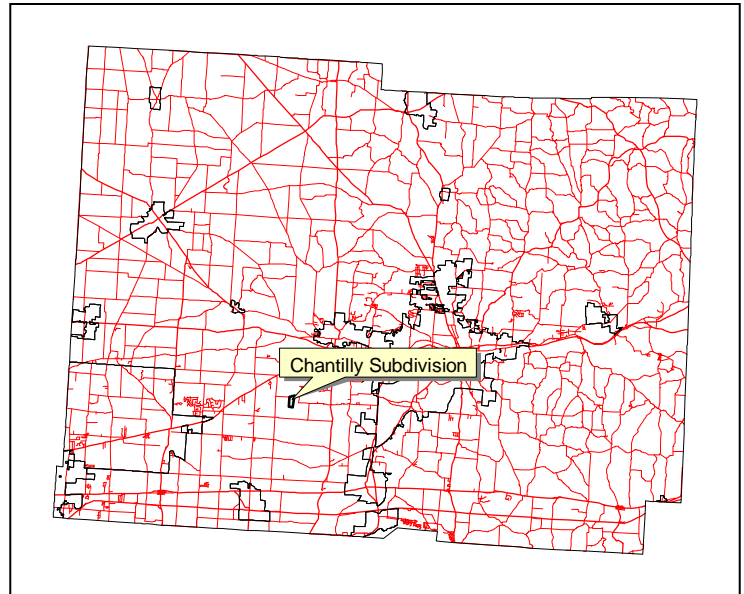
Established: August 26, 2004

Watershed: Subdivision Area 77.130 acres

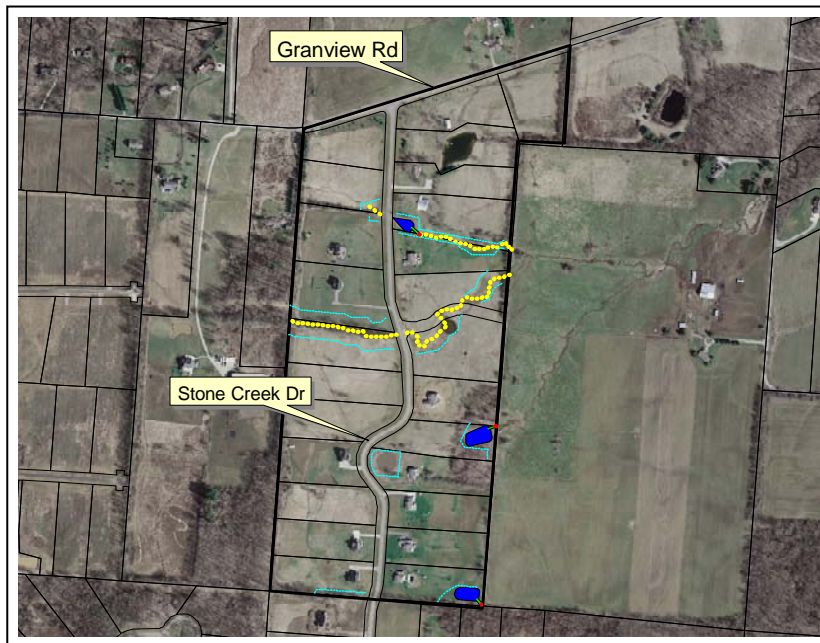
Length of project: Approximately 2200 ft.

Assessed Parcels: 25

Maintenance Base: \$ 15,325.00



Comments: Project includes three stormwater control basins and approximately 2200 feet of unimproved drainage ditch, stream or swale. Drainage is to Ramp Creek.



Map Legend

- Blue areas: Stormwater basins
- Green lines: Storm outlet pipes
- Red: Rock outlet protection
- Yellow dotted lines: ditches & swales
- Light Blue lines: drainage & conservation easements
- Dark lines: Subdivision phase boundary
- Lighter lines: Parcel boundaries