



Licking County Soil and Water Conservation District

771 E. Main Street, Suite 100 - Newark, Ohio 43055-6971  
Phone (740) 670-5330 - Fax (740) 670 - 5338  
www.lickingswcd.com

**Licking County Petition Drainage Projects**

Project Name: Curry Ditch

Township: Hartford

Type: Open Ditch

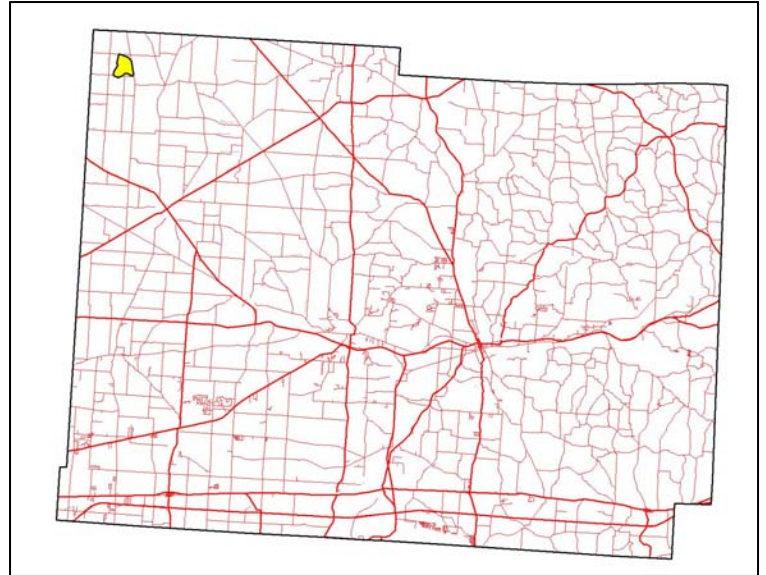
Established: Oct 5, 2006

Watershed: 434 acres

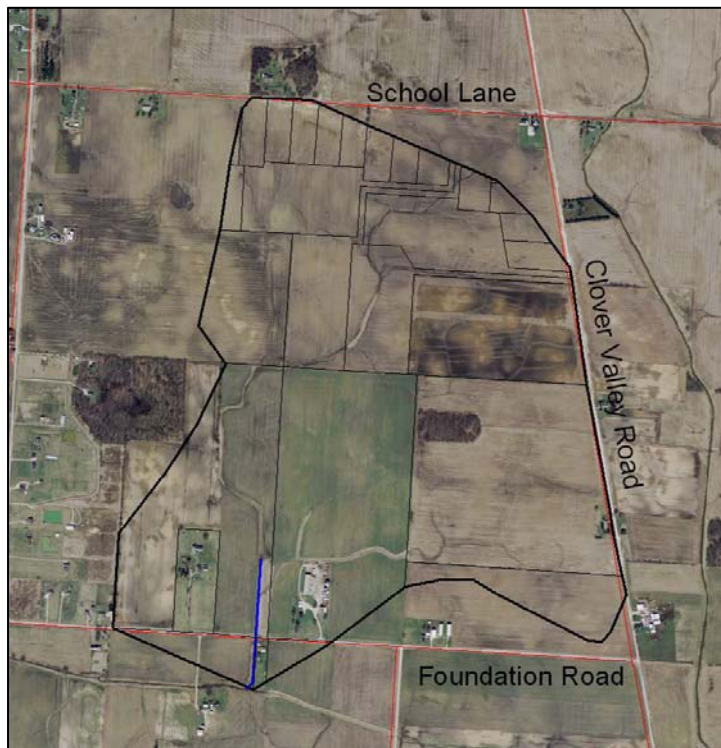
Length of project: 1,320 feet

Assessed parcels: 31

Original construction cost: \$25,948.16



Comments: Flows south and outlets into Rattlesnake Creek; 2 rock chutes serving as waterway outlets are included in the project.



Map Legend

- Blue lines: Open ditches or tile mains
- Dark lines: Watershed boundary
- Lighter lines: Parcel boundaries
- Red lines: Roads