



Licking County Soil and Water Conservation District

771 E. Main Street, Suite 100 - Newark, Ohio 43055-6971  
Phone (740) 670-5330 - Fax (740) 670 - 5338  
www.lickingswcd.com

**Licking County Petition Drainage Projects**

Project Name: Gaylord Ditch

Township: Jersey, Pataskala City, St. Albans,  
Harrison

Type: Grass waterways and tile mains

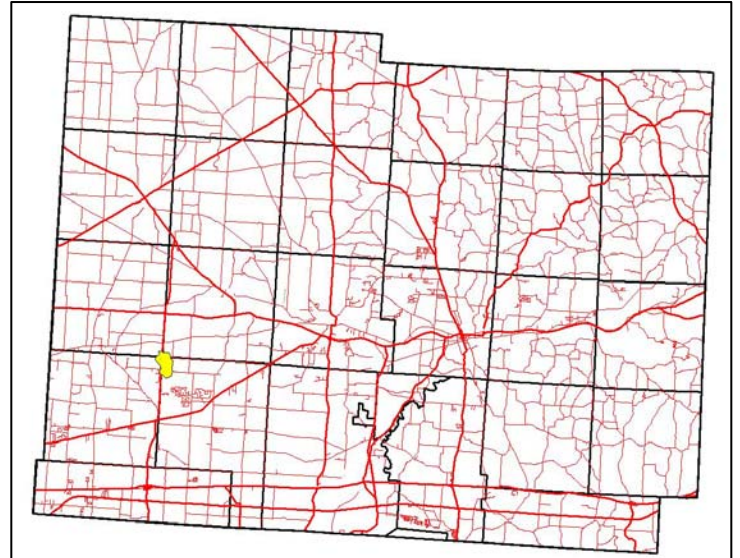
Established: Nov 21, 1977

Watershed: 480 acres

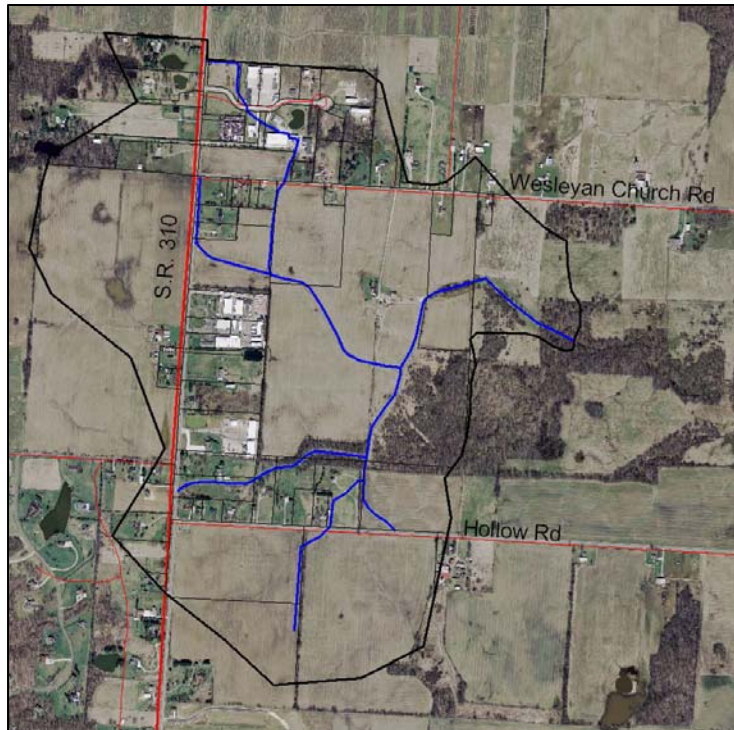
Length of project: 10,750 feet

Assessed Parcels: 77

Original construction cost: \$12,856.81



Comments: Project consists of grass waterways and ditches constructed over old tile mains ranging from 8 to 24-inch; flows south from Shackelford Drive, east from Route 310, north from Hollow Road into main channel; outlets at a concrete structure; tile mains are much older than the grass waterways and are in poor condition; water channels are extremely flat and drain poorly; insufficient maintenance funds hinder maintenance and repairs.



Map Legend

- Blue lines: Open ditches or tile mains
- Dark lines: Watershed boundary
- Lighter lines: Parcel boundaries
- Red lines: Roads