



Licking County Soil and Water Conservation District

771 E. Main Street, Suite 100 - Newark, Ohio 43055-6971
Phone (740) 670-5330 - Fax (740) 670 - 5338
www.lickingswcd.com

Licking County Petition Drainage Projects

Project Name: Harvest Ridge Section 1

Township: Harrison

Type: Subdivision Drainage Maintenance
Outside of public rights-of-way

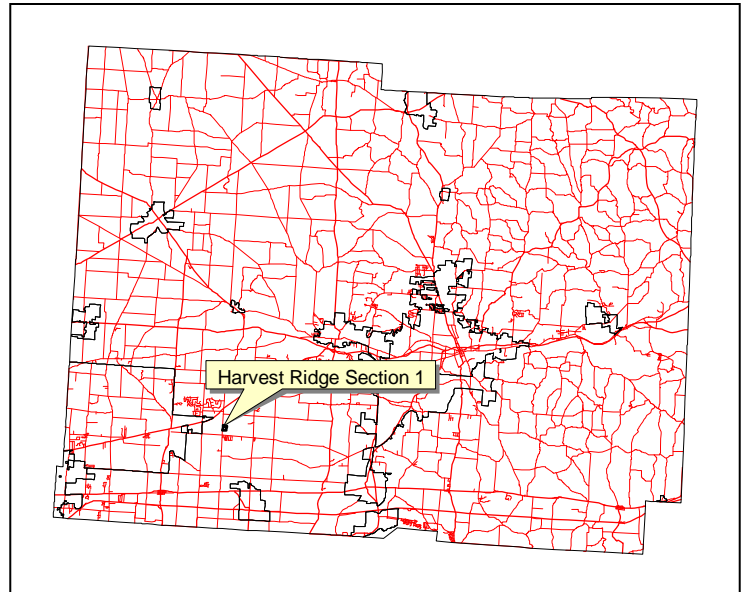
Established: September 20, 2004

Watershed: Subdivision Area 27.524 acres

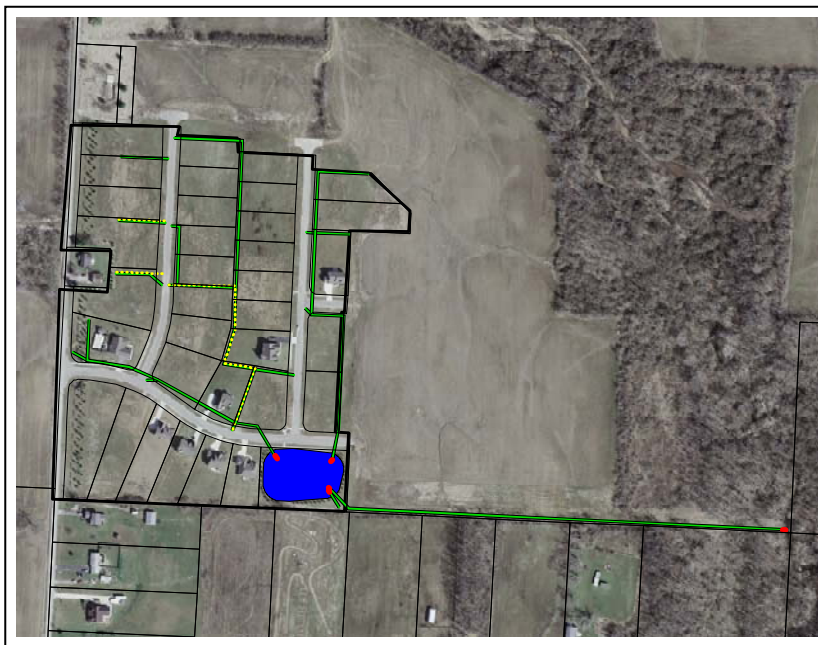
Length of project: Approx. 6385 ft.

Assessed Parcels: 34

Maintenance Base: \$268,433.50



Comments: Project includes approximately 6385 feet of storm sewer, 1140 feet of flood routing swale and one stormwater control pond. The outlet storm sewer extends to the east about 1500 feet and discharges to an unnamed tributary of the South Fork Licking River.



Map Legend

- Blue area: Stormwater basin
- Green lines: Storm sewers
- Red: Rock outlet protection
- Yellow dotted lines: flood route swales
- Dark lines: Subdivision phase boundary
- Lighter lines: Parcel boundaries