



Licking County Soil and Water Conservation District

771 E. Main Street, Suite 100 - Newark, Ohio 43055-6971
Phone (740) 670-5330 - Fax (740) 670 - 5338
www.lickingswcd.com

Licking County Petition Drainage Projects

Project Name: Ross Ditch

Township: Hartford and Monroe

Type: Open Ditch

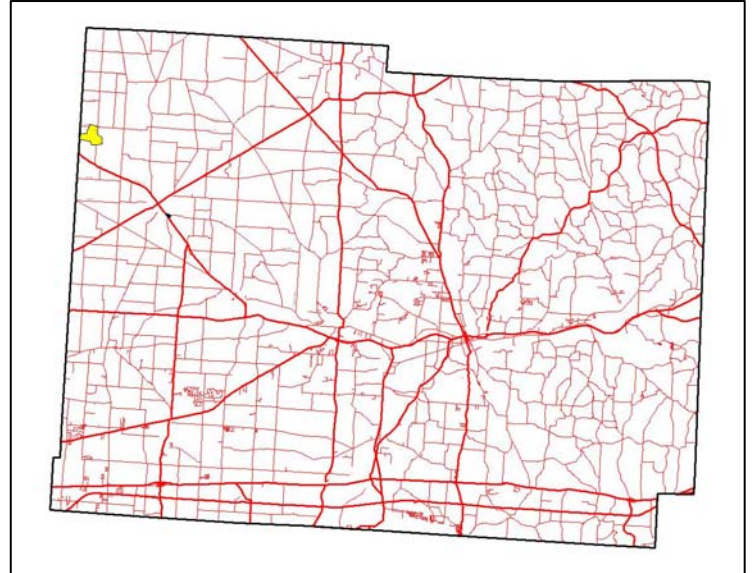
Established: 1977

Watershed: 397 acres

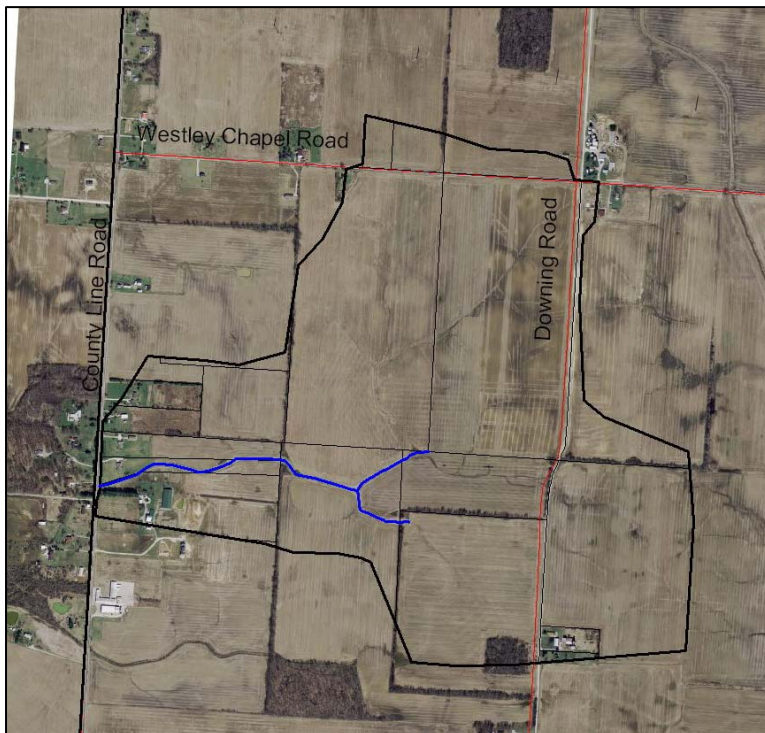
Length of project: 3,790 feet

Assessed parcels: 18

Maintenance Base: \$1,605.05



Comments: Flows west into Delaware County; the Delaware portion is not on maintenance and periodically limits the effectiveness of Ross Ditch.



Map Legend

- Blue lines: Open ditches or tile mains
- Dark lines: Watershed boundary
- Lighter lines: Parcel boundaries
- Red lines: Roads