



Licking County Soil and Water Conservation District

771 E. Main Street, Suite 100 - Newark, Ohio 43055-6971  
Phone (740) 670-5330 - Fax (740) 670 - 5338  
www.lickingswcd.com

**Licking County Petition Drainage Projects**

Project Name: Royal Acres Section 2 Phase 1

Township: Etna

Type: Subdivision drainage maintenance

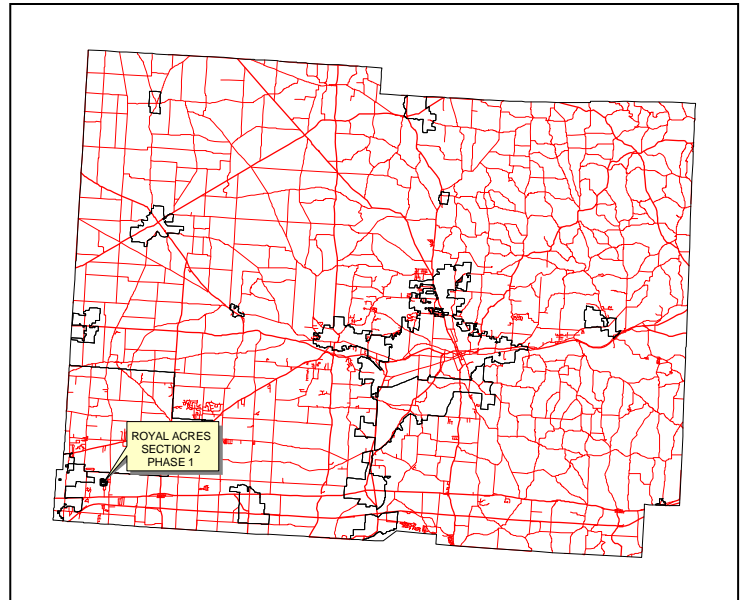
Established: December 20, 2004

Subdivision Phase Area: 38.24 acres

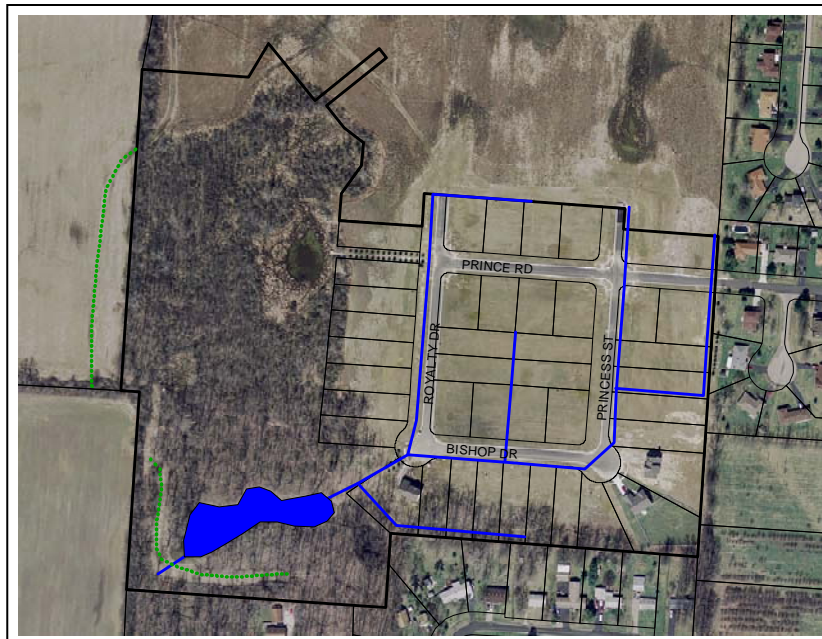
Length of project: Approx. 4035 ft.

Assessed Parcels: 41

Maintenance Base: \$160,854.00



Comments: Project includes approximately 4035 ft of storm sewer, one storm water control basin, 500 ft of drainage swale in conjunction with the storm sewer, and 650 ft of dike (off-site) to contain the basin's water at high-water stage.



Map Legend:

- Blue lines: Open ditches, tiles or storm sewers
- Blue areas: Storm water basins
- Green dotted lines: Dikes
- Dark lines: Subdivision phase boundary
- Lighter lines: Parcel boundaries